

- 2/wooden dowel rods 22 dia. x 900 mm long

- 2/28.6mm out/ dia x 1.6 mm  
wall M.S. tubes

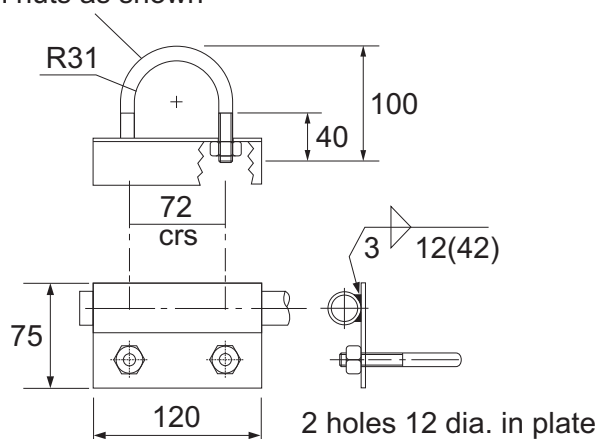


- 2/M.S. plates 2.5 mm thick





R3 - 3

- 2/M10 galvanised 'U' bolts  
with nuts as shown



- Plate and tube assemblies to be primed & coated with  
white enamel after welding, or hot-dip galvanised to AS 1650 after welding

#### Colour Legend

	Black (legend)
	Fluorescent red-orange (ground)

#### Note:

1. Flag material must be opaque and double thickness.  
Legend shall be provided on both sides of the flag.
2. For flag details refer to R3-3.



**Queensland  
Government**

## REGULATORY FLAG AND FITTINGS "CHILDREN CROSSING"

Infrastructure Management & Delivery Division

APPROVED AS OFFICIAL TRAFFIC SIGN

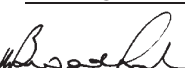
20/09/12  
Date

**TC9472**

Designed  
WB 4/92

Checked  
MC 4/96

Scale  
Not to Scale

  
PRINCIPAL ENGINEER  
(Traffic Engineering)

A	B	C		
---	---	---	--	--